

## Itelite Install Guide for YUNEEC ST10/ST10+ Radio

### Includes:

- (1) Antenna
- (3) Coax Pigtails
- (1) 7.5" WIFI Connector
- (1) 4.5" 2.4ghz Connector
- (1) 3.5" 2.4ghz Connector
- (2) Nuts for fastening  
Antenna to Bracket
- (1) Fastening Bracket
- (1) Wingnut
- (1) 6/32 x 1 Screw
- (1) Insulated Washer
- (1) Foam Tape for Bracket
- (2) Heat Shrink



# Itelite Install Guide for YUNEEC ST10/ST10+ Radio



Step 1: Remove battery



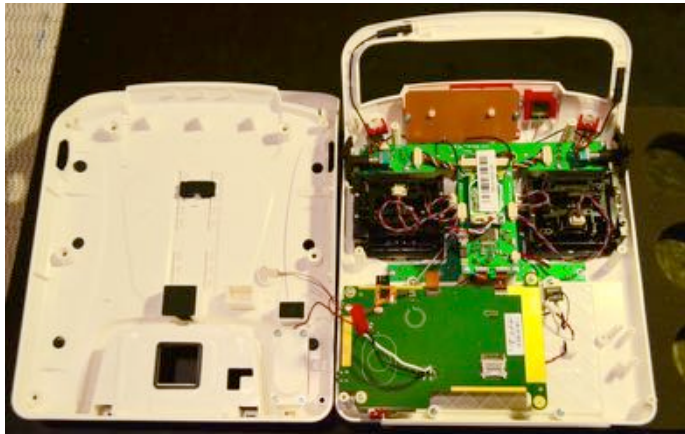
Step 2: Remove Rubber handles from both sides



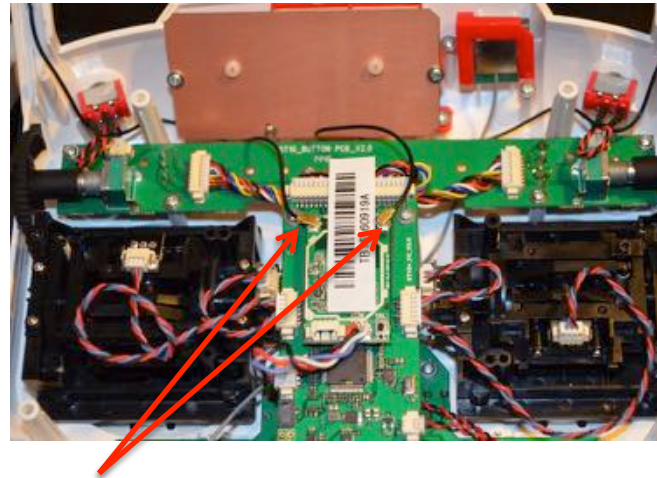
Step 3: Remove 6 screws Larger ones from unit



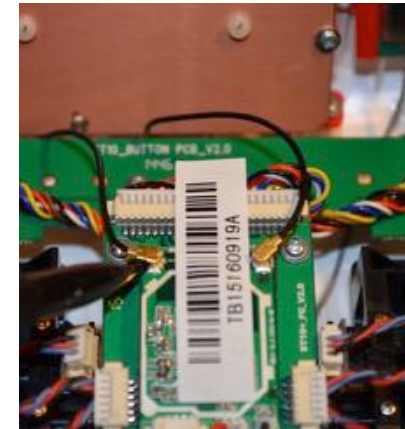
Step 4: Remove 2 screws Small ones from top handle



Step 5: Open panel to expose internal parts

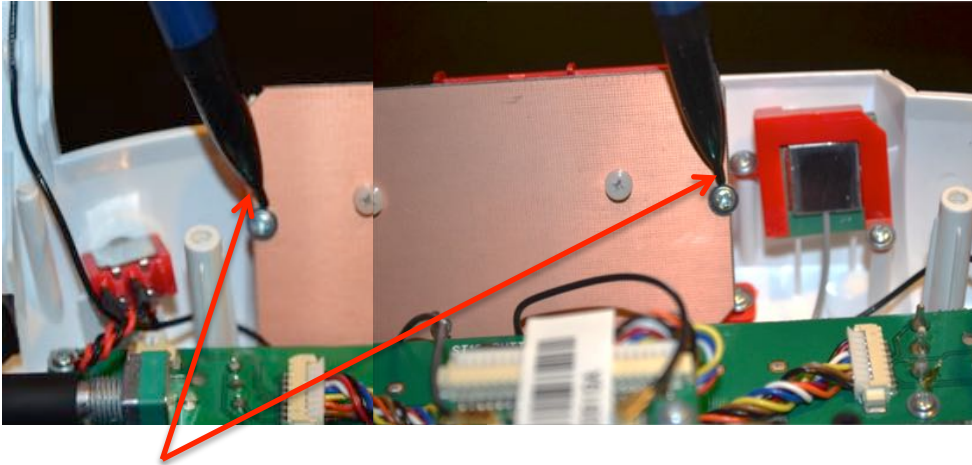


Step 6: Locate the (2) 2.4ghz cables to replace. Left side replace with 3.5" Connector. Right side with 4.5" Connector

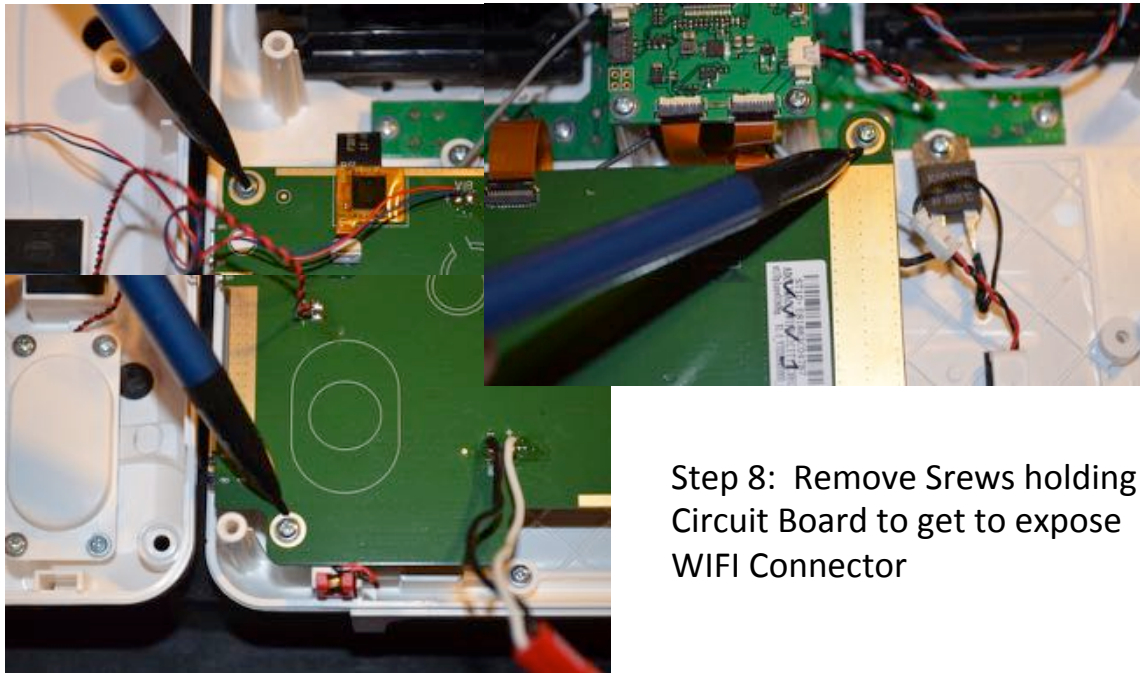


Close UP

## Itelite Install Guide for YUNEEC ST10/ST10+ Radio



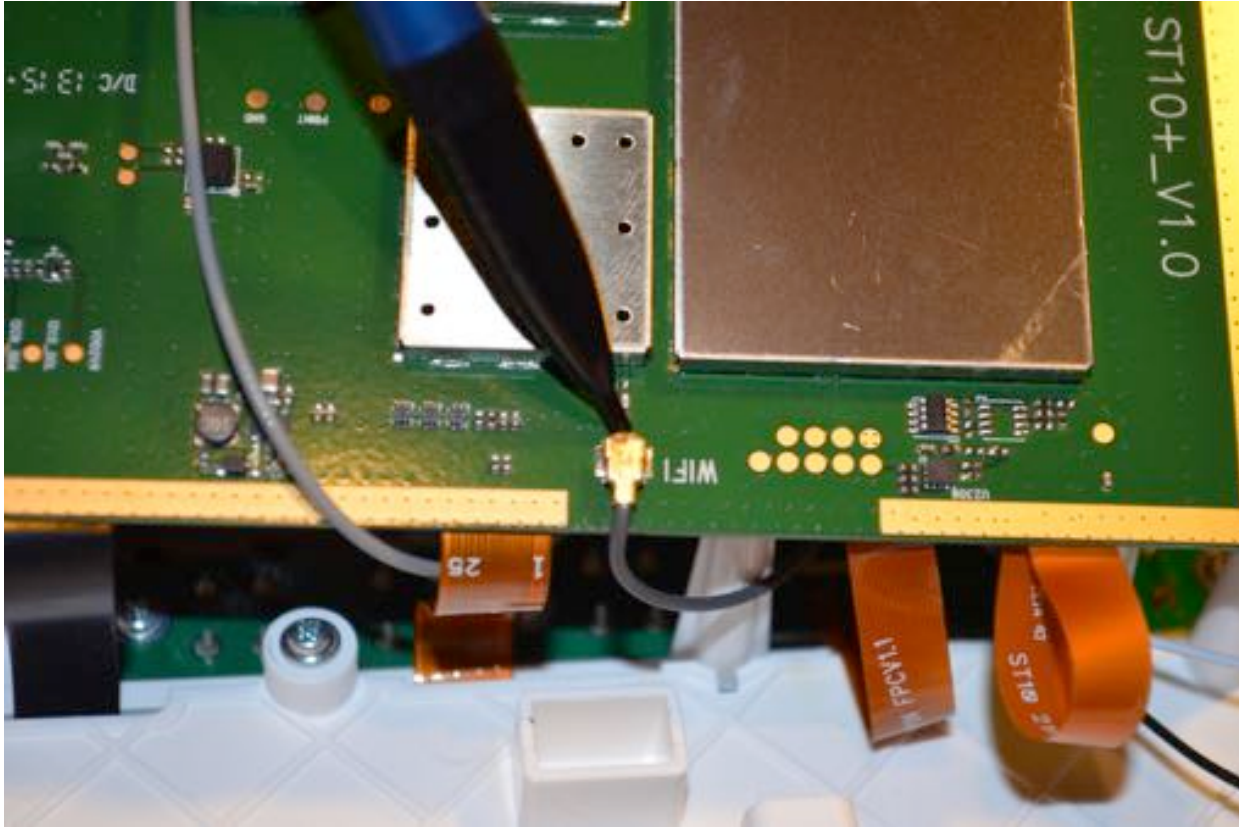
Step 7: Remove Screw holding existing WIFI Antenna



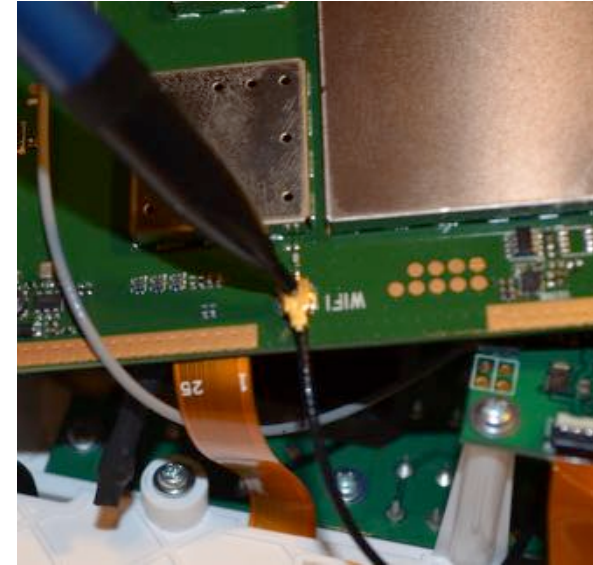
Step 8: Remove Screws holding Circuit Board to get to expose WIFI Connector

**VERY IMPORTANT NOT TO PULL ON BOARD, 3 RIBBON CONNECTORS ARE FRAGILE**

## Itelite Install Guide for YUNEEC ST10/ST10+ Radio



Step 9: CAREFULLY flip board over to view WIFI connector. Remove connector to replace with 7.5" WIFI Connector (included in kit)

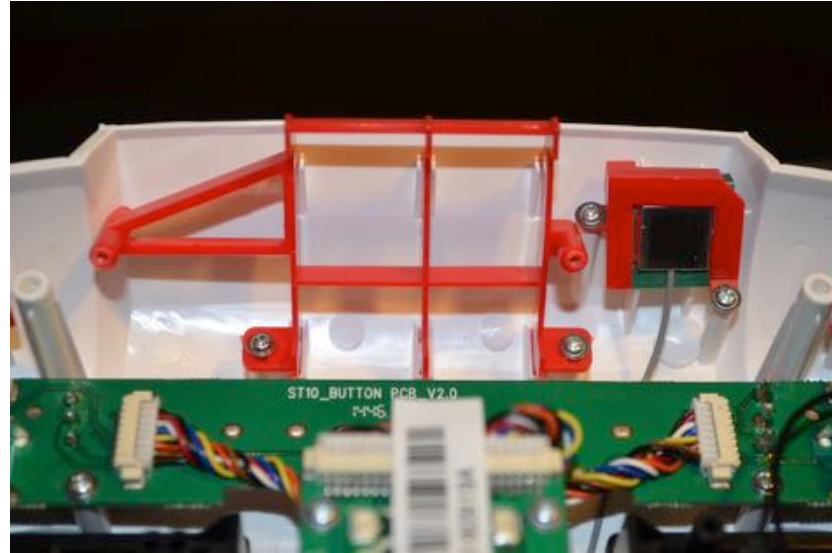


Step 10: Plug 7.5" cable to port, passing cable underneath board and fasten back the board in place

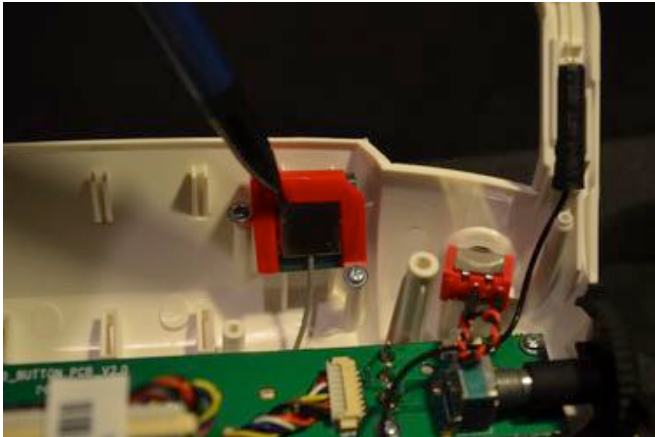
## Itelite Install Guide for YUNEEC ST10/ST10+ Radio



Step 11: CAREFULLY slot the MIC back into position



Step 12: Remove Frame Board WIFI Holder as this is not used

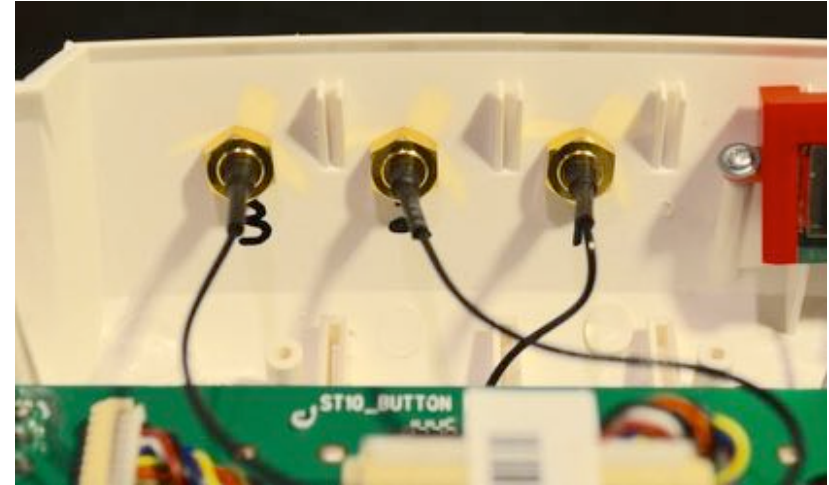


NOTE: DO NOT TOUCH THIS. It's the Radios GPS Module..

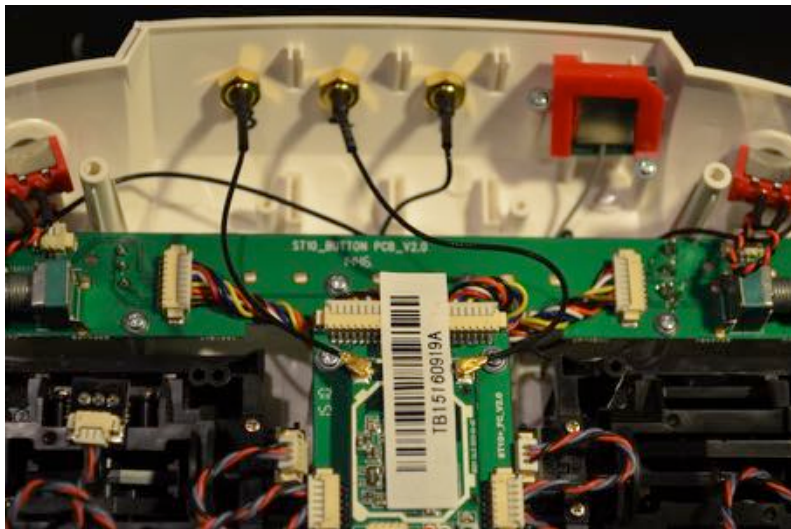


Step 13: USE Marker to mark drill holes for connectors. Good reference to number them for Port Assignment

## Itelite Install Guide for YUNEEC ST10/ST10+ Radio



Step 14: Drill out holes with  $\frac{1}{4}$  Drill Bit, then install each cable connector to slot. #1 Slot: WIFI 7.5" Connector. #2 Slot: 4.5" Antenna Connector. #3 3.5" Antenna Connector.



Step 15: Connect tail ends to proper 2.4ghz slots. Push in firmly to lock into place

### NOTE:

You can remove factory antenna ends or using (2) heat shrink tubes (included) to cover exposed gold ends.

MAKE SURE ALL PLASTIC SHAVINGS FROM DRILLING OUT SHELL are vacuum OUT.

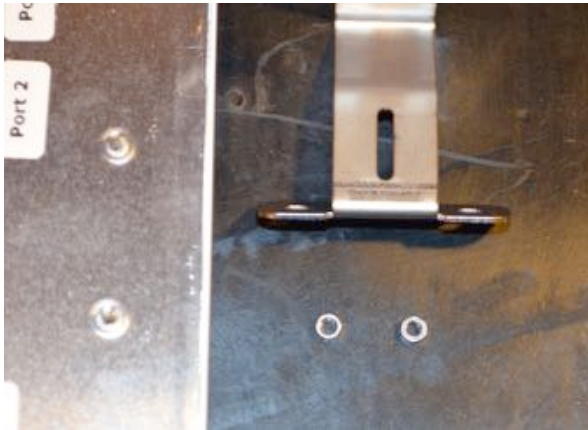
Step 16: Snap shell back together and Fasten all screws that hold shell together

## Itelite Install Guide for YUNEEC ST10/ST10+ Radio



View of Handle Drilled out

Step 17: Use existing Bracket and bend over Center of the Handle to Mark hole to drill out into handle. USE SIZE 9/64 Drill bit



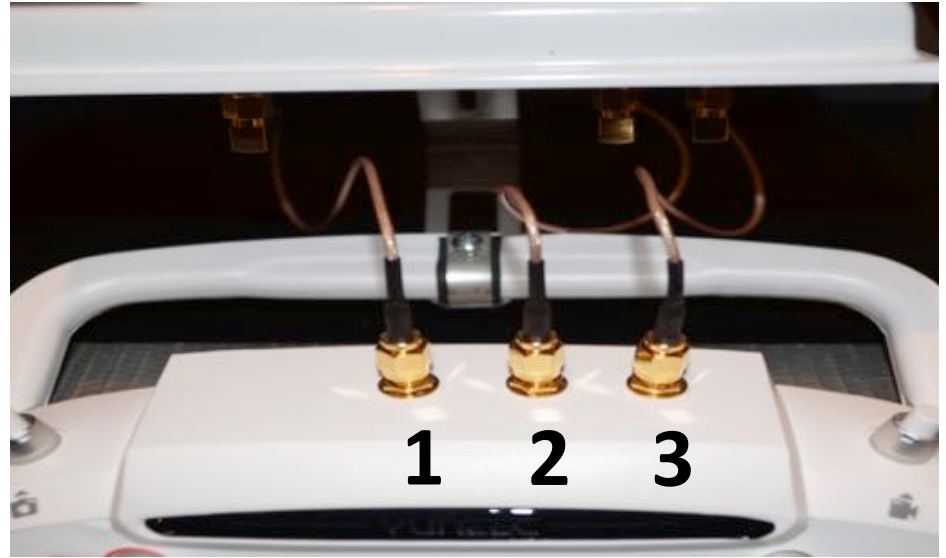
View of Bracket Mounted to Antenna

Step 18: Locate (2) small nuts to fasten bracket to Antenna

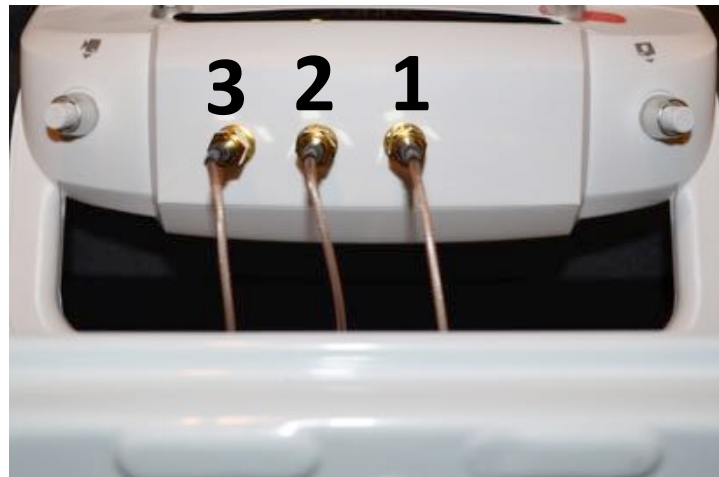
## Itelite Install Guide for YUNEEC ST10/ST10+ Radio



Step 19: Place Bracket over handle to fasten to Radio. (this is a BOTTOM VIEW) make sure you use the Foam Tape provided to secure and protect the handle. Pass bolt and fasten using Insulated Washer before Wing nut.



Step 20: Connect Antenna cables to each slot. Please note the numbering of each cable for the Port Numbers on back of Antenna





## Itelite Install Guide for YUNEEC ST10/ST10+ Radio

